

# Lolly Stick Box

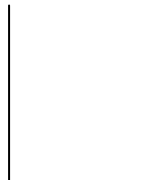


**You will need 70 Lolly sticks**

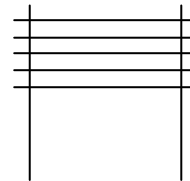
- 42 lolly sticks for the base
- 28 lolly sticks for the top
- glue

## **Method—Base**

1. Place 2 sticks :-

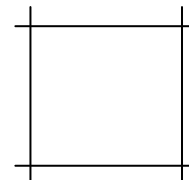


2. Glue top of both sticks and then stick 10 sticks across to form the base.



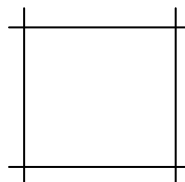
3. Repeat number 1.

4. Glue ends of top sticks and place 2 sticks the other way. Keep repeating to build up the sides 7 rows up, 8 rows across to complete the base.

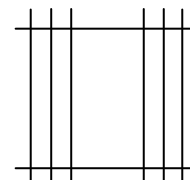


## **Method—Top**

1. Place 4 sticks to form base :-



2. Place 1 stick each side working towards the centre. Continue until sticks meet in the centre with a cross.



3. Decorate by painting if required.